

114

NOTICE: THIS PLAT, AS RECORDED IN ITS GRAPHIC FORM, IS THE OFFICIAL DEPICTION OF THE SUBDIVIDED LANDS DESCRIBED HEREIN AND WILL IN NO CIRCUMSTANCES BE SUPPLANTED IN AUTHORITY BY ANY OTHER GRAPHIC OR DIGITAL FORM OF THE PLAT. THERE MAY BE ADDITIONAL RESTRICTIONS THAT ARE NOT RECORDED ON THIS PLAT THAT MAY BE FOUND IN THE PUBLIC RECORDS OF THIS COUNTY.

WESTLAKE - POD K

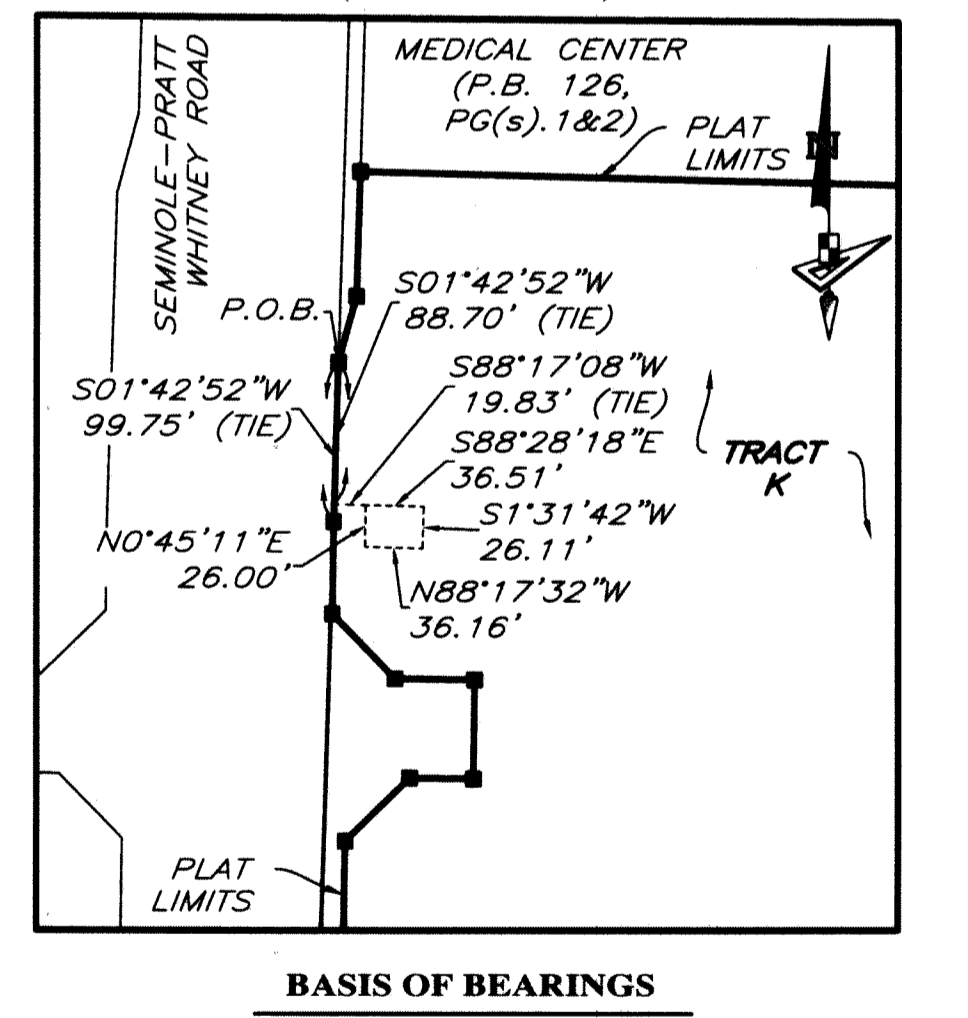
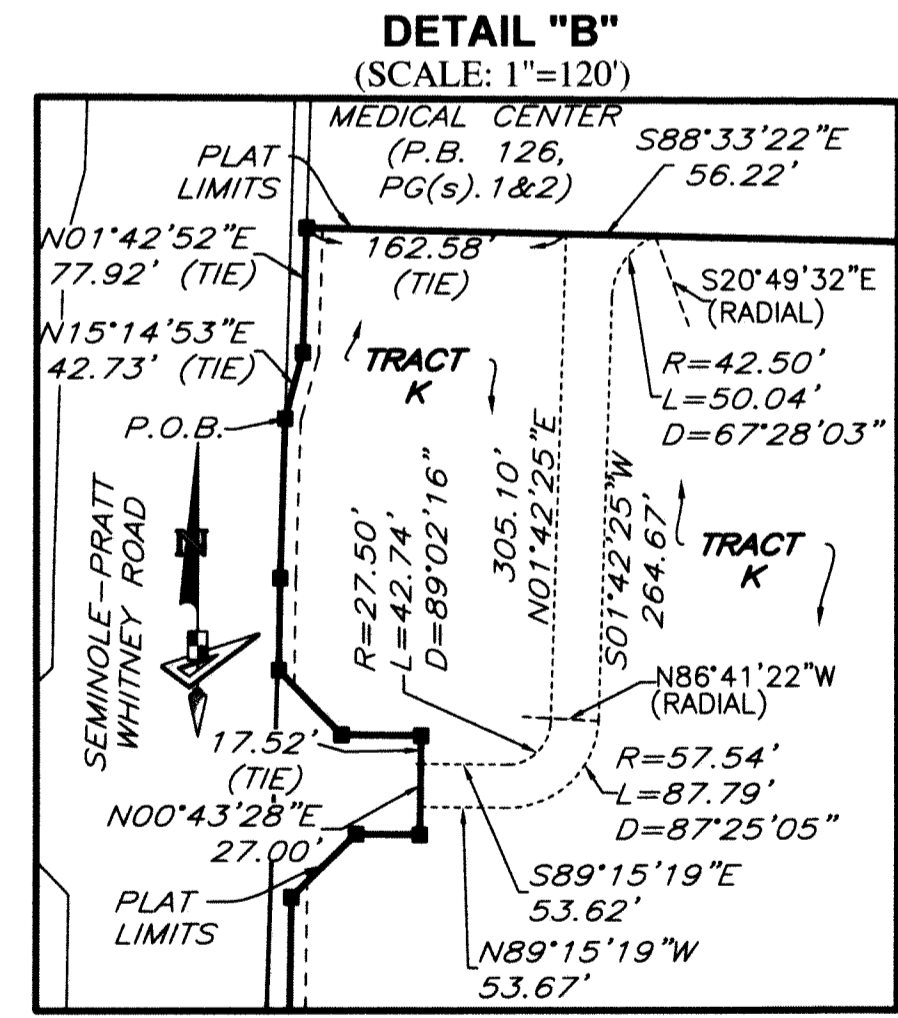
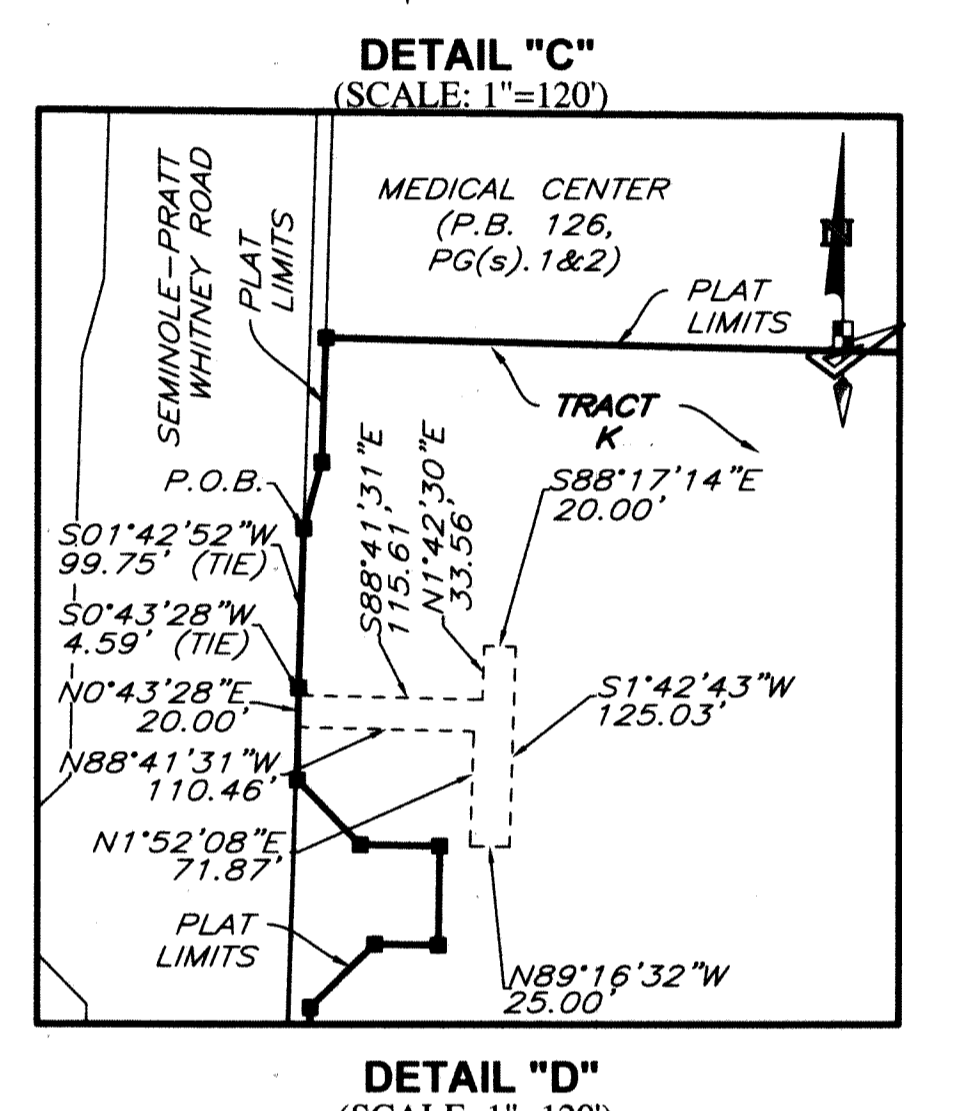
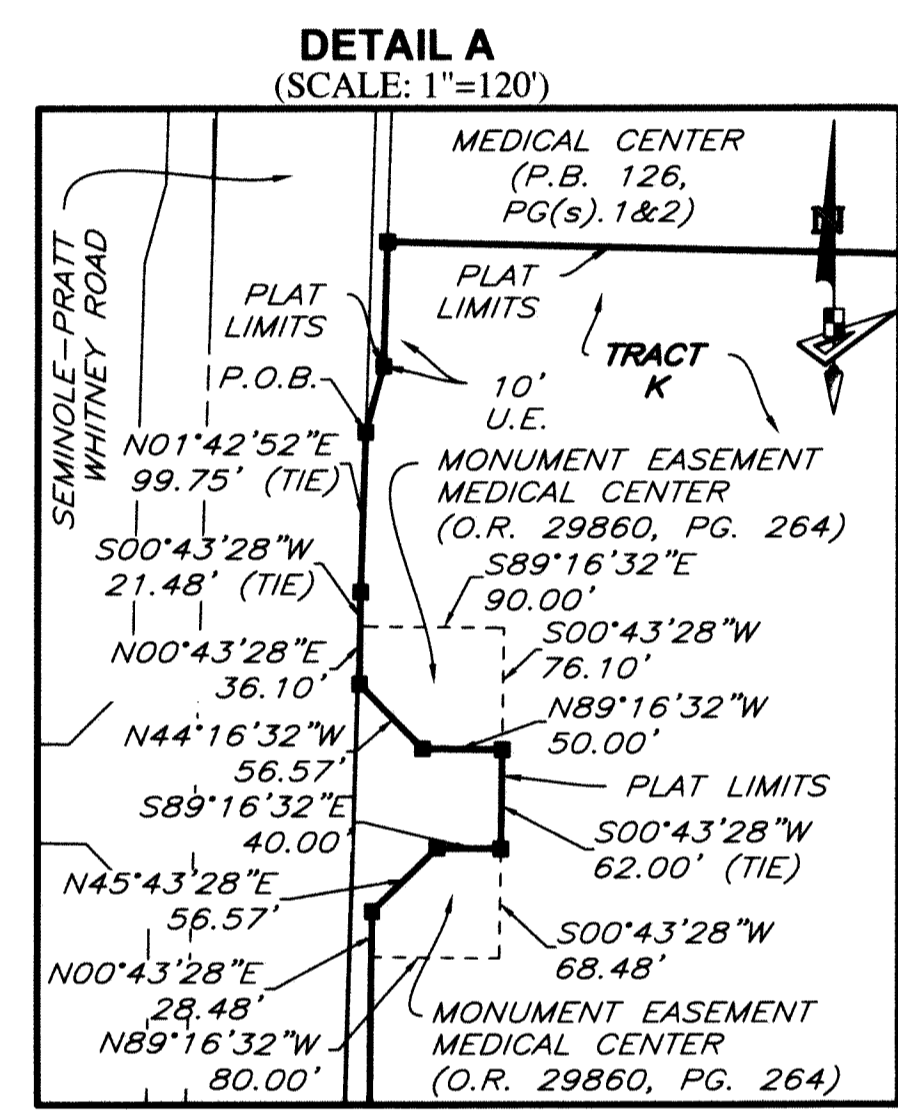
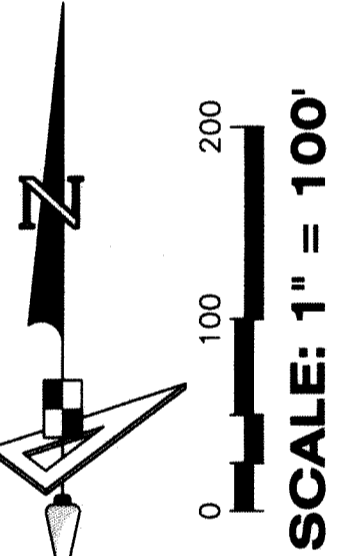
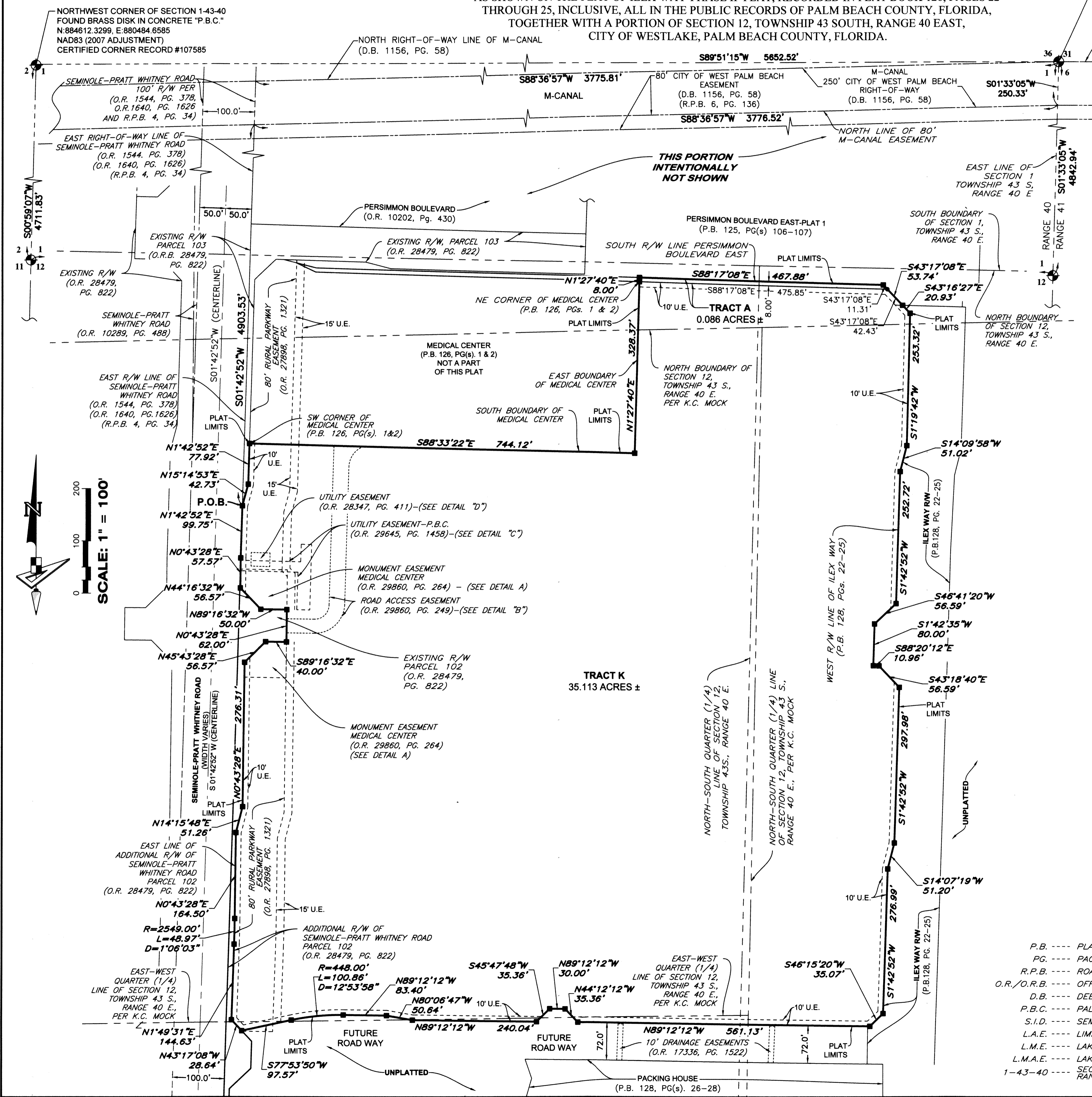
A SUBDIVISION IN SECTION 12, TOWNSHIP 43 SOUTH, RANGE 40 EAST, CITY OF WESTLAKE, PALM BEACH COUNTY, FLORIDA BEING, IN PART, A REPLAT OF A PORTION OF O.S.T. 2 AS SHOWN ON THE PLAT OF PERSIMMON BOULEVARD EAST - PLAT 1, RECORDED IN PLAT BOOK 125, PAGES 106 AND 107, AND O.S.T. #5 AND #6 AS SHOWN ON THE PLAT OF ILEX WAY-PHASE II PLAT, RECORDED IN PLAT BOOK 128, PAGES 22 THROUGH 25, INCLUSIVE, ALL IN THE PUBLIC RECORDS OF PALM BEACH COUNTY, FLORIDA, TOGETHER WITH A PORTION OF SECTION 12, TOWNSHIP 43 SOUTH, RANGE 40 EAST, CITY OF WESTLAKE, PALM BEACH COUNTY, FLORIDA.

POINT OF COMMENCEMENT
NORTHEAST CORNER OF SECTION 1, TOWNSHIP 43 S., RANGE 40 E. SET 4" IRON PIPE "PUBLIC LAND SURVEY CORNER-TALLAHASSEE MERIDIAN" BRASS DISK "10' EAST" SET IN CONCRETE FOUND 10' EAST ON SECTION LINE N: 884626.7147 - E: 886137.1629 NAD83 (2007 ADJUSTMENT) CERTIFIED CORNER RECORD #107597

BASIS OF BEARING
NORTH BOUNDARY OF SECTION 6, TOWNSHIP 43 S., RANGE 41 E. S.89°48'53"E., 5270.23' (MEASURED) S.89°48'52"E., 5270.39' (COUNTY)

NORTHEAST CORNER SECTION 6-43-41
FOUND BRASS DISK IN CONCRETE "P.B.C." N:884609.6818, E:891407.3638 NAD83 (2007 ADJUSTMENT) CERTIFIED CORNER RECORD #107591

COORDINATES SHOWN HEREON ARE FLORIDA STATE PLANE GRID DATUM = NAD83 2007 ADJUSTMENT ZONE = FLORIDA EAST LINEAR UNITS = US SURVEY FEET COORDINATE SYSTEM = 1983 STATE PLANE PROJECTION = TRANSVERSE MERCATOR ALL DISTANCES ARE GROUND SCALE FACTOR = 1.0000 GROUND DISTANCE X SCALE FACTOR = GRID DISTANCE PLAT BEARING = GRID BEARING NO ROTATION ALL TIES TO SECTION CORNERS AND QUARTER CORNERS ARE GENERATED FROM MEASURED VALUES



- LEGEND**
- P.B. --- PLAT BOOK
 - PG. --- PAGE
 - R.P.B. --- ROAD PLAT BOOK
 - O.R./O.R.B. --- OFFICIAL RECORDS BOOK
 - D.B. --- DEED BOOK
 - P.B.C. --- PALM BEACH COUNTY
 - S.I.D. --- SEMINOLE IMPROVEMENT DISTRICT
 - L.A.E. --- LIMITED ACCESS EASEMENT
 - L.M.E. --- LAKE MAINTENANCE EASEMENT
 - L.M.A.E. --- LAKE MAINTENANCE ACCESS EASEMENT
 - 1-43-40 --- SECTION 6, TOWNSHIP 43 SOUTH, RANGE 41 EAST
 - U.E. --- UTILITY EASEMENT
 - D.E. --- DRAINAGE EASEMENT
 - R.P.E. --- RURAL PARKWAY EASEMENT
 - O.S.T. --- OPEN SPACE TRACT
 - R/W --- RIGHT-OF-WAY
 - C --- CENTER LINE OF ROAD
 - R --- RADIUS
 - L --- ARCH LENGTH
 - D --- DELTA ANGLE

BASIS OF BEARINGS
BEARINGS SHOWN HEREON ARE BASED ON THE NORTH BOUNDARY OF SECTION 6, TOWNSHIP 43 SOUTH, RANGE 41 EAST, HAVING A GRID BEARING OF S.89°48'53"E. (MEASURED). BEARINGS SHOWN HEREON, REFER TO THE STATE PLANE COORDINATE SYSTEM, NORTH AMERICA DATUM OF 1983 (NAD 83 - '07) FOR THE EAST ZONE OF FLORIDA. SAID BASIS OF BEARING IS THE SAME IN THE NORTH AMERICAN DATUM OF 1983 (NAD 83 - '90).

GeoPoint
Surveying, Inc.

4152 W. Blue Heron Blvd.
Suite 105
Riviera Beach, FL 33404

Phone: (561) 444-2720
www.geopointsurvey.com
Licensed Business Number: 187368

Sheet No. 2 of 2 Sheets